

WITHIN A LANTERN

Cloud Dwellers

1: Give people a reason to consider small prefabricated dwellings as a mainstream choice within the marketplace.

Create an object of desire. Try things that you couldn't stretch across a standard house size. This scale presents the chance for singular concept and an intense phenomenological engagement.

2: Target the top end of the market's comfort zone, and make allowances to push the boundaries later.

Don't try to make the dwelling dirt cheap. Follow on with the very low cost variations. Pursue a simple and reasonable approach to sustainability. Use natural ventilation, collect the rainwater, use local / low toxicity materials. By nature of the scale, these have a low ecological footprint. Follow on with the option for self sufficiency.

3: Embrace the fact these dwellings are not site specific, by establishing a concept that focuses on the experiential qualities of inhabiting.

They are conceived without a specific view or urban context to design for, and with the need to allow for multiple close proximity siting arrangements. The abstract dance of soft glowing translucency has been used as spectacle that can be accommodated within these constraints. An oversized lantern hangs over the space like a glowing umbrella. The flatpacked, rice paper clad prism sits clear of the roof and walls, glowing by day with skylights, and at night from hidden light sources. The ephemeral emotive qualities aim to be far more noticeable and engaging than the diminutive scale of the dwelling.

4: Mitigate the small size by presenting an unfamiliar variation on the typical perception of domestic scale.

The overscaling of the lantern miniaturizes the occupant. Manipulating floor levels allowed different functions to merge and expand the perception of scale. The dining table becomes the kitchen bench. The study desk becomes the bedroom floor. Spatial layering reveals suggestions of what is beyond, a perception in excess of the modest provision.

5: Stack the prefabricated components on top of each other for the spatial opportunities and a reduced footprint.

Typically prefabricated module are joined side by side. Why not flip things around? A smaller footprint makes sense when aiming for higher density. The structural requirements of transportation and

stacking are met by a RHS steel primary frame and light gauge steel infill framing.

6: Start a language of flexibly functioning components.

We envisage the ability to combine these dwellings with 2 bed / 1 bath children's modules, or an open plan studio or office. This offers the potential for a diverse social mixture, and adaptability over the life of the dwellings. A co-housing arrangement is also possible where they open on to shared landscape spaces, with a communal building also provided.

7: Create a site specific response by adding from a low tech kit of parts.

The system uses standardised dwellings combined with simple landscape structures to create shared spaces for gathering, movement, and utilitarian purposes. The kit of parts can address multiple interfaces between the street, communal spaces, neighbouring properties and the dwelling's private spaces. The kit of parts approach also applies at the dwelling scale, with clip on shading devices offering adaptability for different solar orientations.

8: Bring density to the suburbs through nimble infill dwellings.

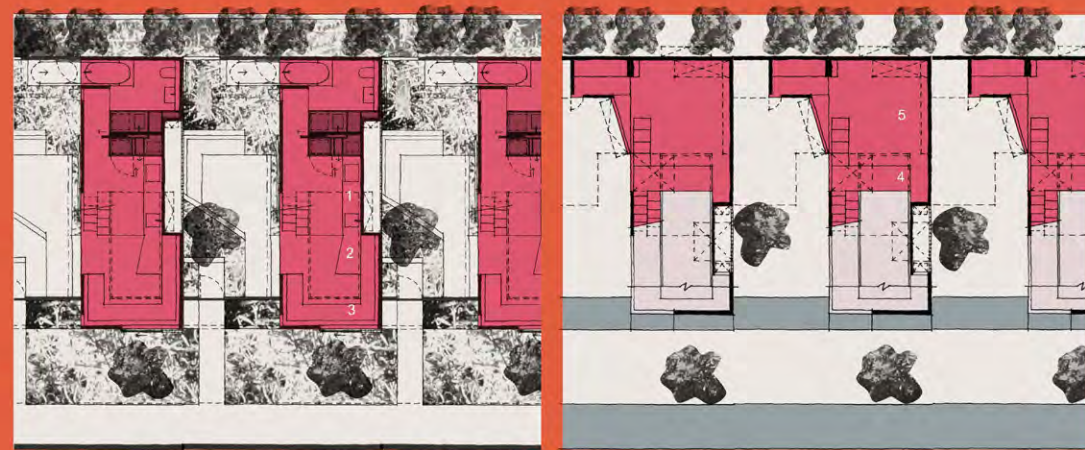
The inner city market already has dwellings of this floor area - bedsit units. The most important application of this scheme is to bring small area dwellings to the many Australian suburban neighbourhoods of large, single family dwellings. This allows flexible infill to occur where there are restrictions on multi residential development.

9: Siting example: 4 dwellings within a standard 600 sqm (40m x 15m) suburban house lot in Brisbane.

A communal outdoor space with bbq and plunge pool would be located at the street interface. A landscape walkway would provide access to the 4 dwellings. The rear of the site would house a small communal shed with work bench, garden store, and an edible garden. A walled courtyard to each dwellings is their entry and outlook. This privacy allows for the close proximity of the dwellings. The side of the dwellings facing their neighbours courtyard contain a series of ventilation shutters. These are high level and open to a meshed alcove, allowing for cross ventilation but maintaining privacy and security. This example presents a viable new option for low impact dwellings that offer a quality of life that exceeds the more wasteful and uninspiring dwellings that fill our suburbs.



Maquette



within a lantern

Longitudinal Section / Courtyard Section / Cross Section / Walkway Section
Lower Plan / Upper Plan
1 Cook / 2 Eat / 3 Sit / 4 Work / 5 Sleep

5 1:100



Suburban House Lot - 15m wide site
Suburban Infill - 15m wide site
Co-Housing
Commercial Lot - 10m wide site
Rural

25 1:500