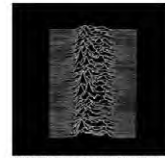


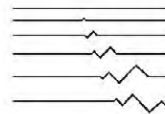
GEELONG AQUARIUM

Tandem

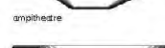
Geelong Aquarium



CREDIT: Alum Cover by Jay DiMatteo



entrance



amphitheatre



stadium



aquarium

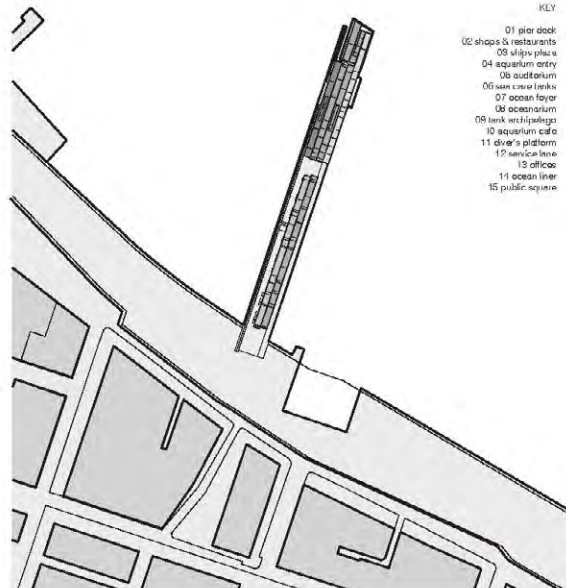
The revitalisation of Geelong's waterfront is shifting the city's cultural and economic identity from heavy industry towards tourism – embracing environmental conservation, education and research.

In a natural amphitheatre surrounded by hills and low lying cliffs, connected directly to the rapidly redeveloping downtown, Cunningham Pier occupies the iconographic heart of Geelong's re-imagined civic centre.

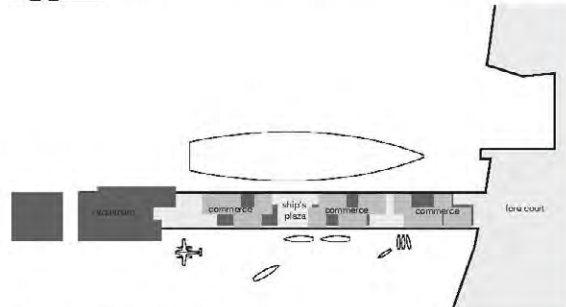
Cunningham Pier's extraordinary physical setting and its historic context create the necessary backdrop for responsible, public architecture reflecting Geelong's historic prominence, and its emerging identity as a harbour side city realising its tourism potential.

The Geelong Aquarium is an iconographic, civic building, occupying the end of the pier and extending it into the water via a series of ocean tanks and raised zones. Alongside the aquarium, the building functions as a research centre devoted to local eco-systems; a commercial hub, capable of supporting visiting cruise ships, buses, yachts, sea plane tours and fishing boats; and as an extension of the public space of the civic centre through the creation of a promenade, open squares and aquarium forecourt.

6 parallel strips run the length of the pier, varying their height and length to create roofs, walkways, decks, quays and terraces. Constructed from recycled timber, the varying heights and steps of these strips recall the same visual effects as wavelets – adding, subtracting, reflecting and refracting – working together to create the variety of spaces necessary for the pier to function, united by a common architectural approach.



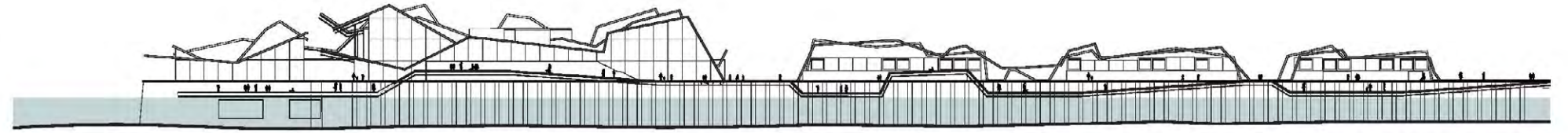
Site Plan 1:5000



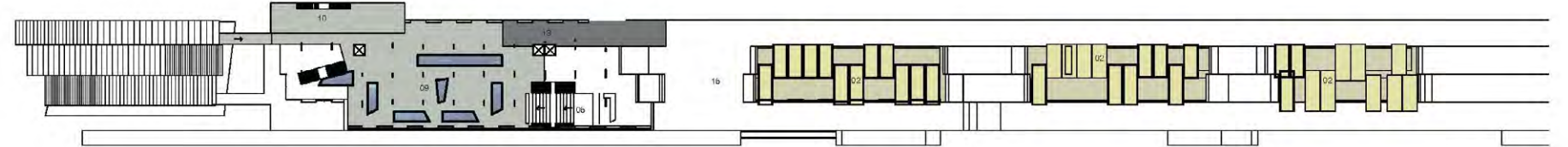
Diagrammatic Program Plan

- KEY
- 01 pier deck
 - 02 shops & restaurants
 - 03 ship's place
 - 04 aquarium entry
 - 05 auditorium
 - 06 main level tanks
 - 07 ocean foyer
 - 08 aquarium
 - 09 tank walkways
 - 10 aquarium cafe
 - 11 diver's platform
 - 12 service lane
 - 13 office
 - 14 ocean liner
 - 15 public square

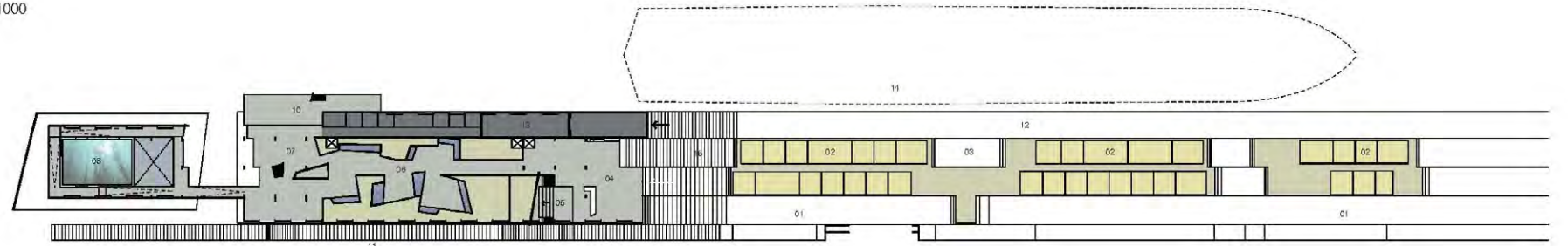
Cunningham Pier - Geelong Victoria



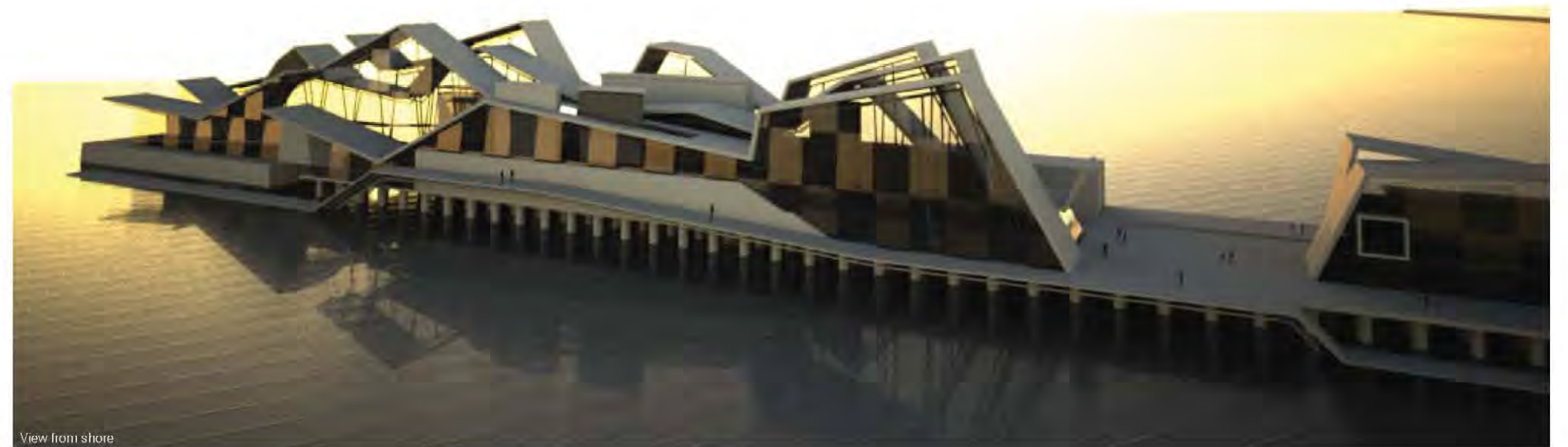
West Elevation 1:1000



Second Floor Plan 1:1000



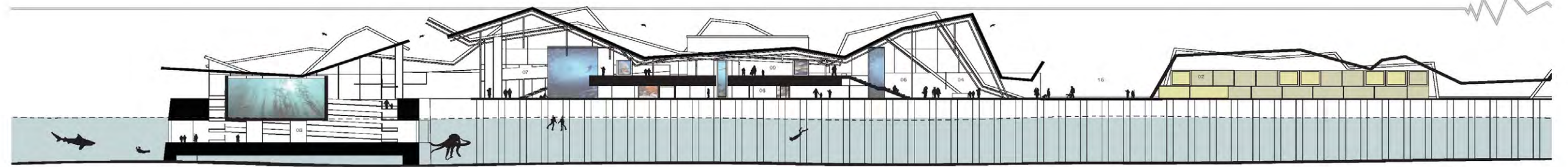
First Floor Plan 1:1000



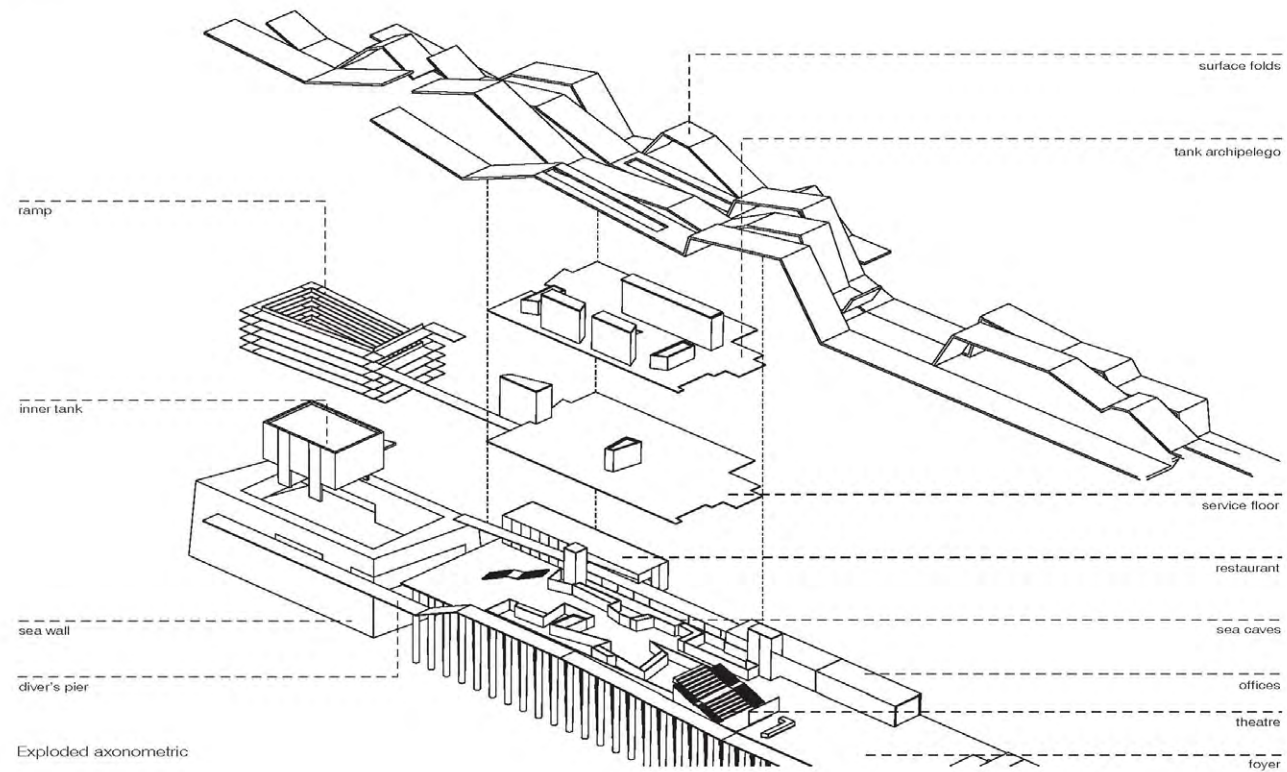
View from shore

GEELONG AQUARIUM

Tandem



Long Section 1:500

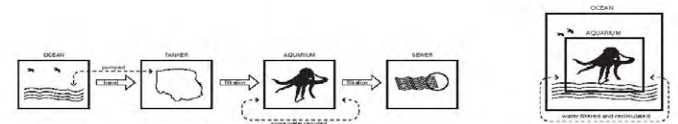


The Geelong Aquarium draws on the thermal mass of Port Phillip Bay to regulate its temperature; thereby dramatically reducing the energy required to run the complex. The air conditioning systems are regulated by exchangers that reject heat into the bay during summer, and draw heat from the water during winter. Natural sunlight is controlled by operable external shading systems; sheltering the thermal mass located in the centre of the building.

The aquarium tanks are fed via filtered sea water, drawn directly from the bay – removing the impost of importing sea water via truck that is standard practise in many existing aquariums.

A service floor separates the lower and upper display zones; providing long term flexibility; allowing tanks to be repositioned simply and quickly as display needs evolve.

1 2



Standard Practice Aquarium Water Process

Proposed Water Process

